

**\$25K  
OFF!**

**FIXED PRICE  
TURN KEY  
HOUSE & LAND**



# \$522,636\*

**FIRST HOME BUYERS PRICE \$512,636<sup>^</sup>**

Discount has been applied to the package price

Price includes standard floorplan with facade

**\$4,888 preliminary fee to secure the home price**

## Jell 1-20

3 2.5 1

**19.24 sqs | 178.71 m<sup>2</sup>**

**Lot 547 Oliveleaf Walk, Diggers Rest**

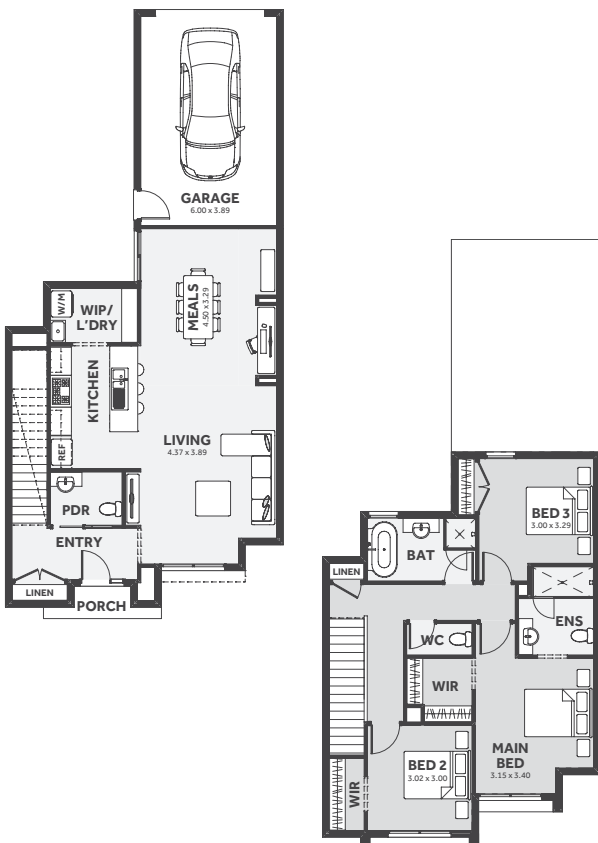
**Land Size: 152 m<sup>2</sup>**

### INCLUSIONS

- 6 Star Energy rating compliant to the standard from and best house orientation<sup>5</sup>
- Double glazed windows<sup>†</sup>
- Fixed site costs and connections
- Quantum zero benchtop & overhead cupboards to kitchen
- 900mm appliances & dishwasher to kitchen
- Choice of tiles or timber-look laminate flooring
- Round Back to Wall Freestanding Bath
- Colorbond roof
- 25-year structural guarantee
- Council & developer requirements
- Tiled Shower Base

### TURN KEY INCLUSIONS

- Front and rear landscaping
- Fencing
- Letterbox
- Toilet rail holders
- Towel rails
- 3.5 kw Split system
- Blinds
- Driveway lip



**Kimberly McIntyre**

**0468 305 237**

**Kimberley.McIntyre@8homes.com.au**

The advertised price reflects the standard floorplan and facade. Solid Start packages are exclusive offers available only from May 5, 2025 through June 30, 2025. All discounts have been incorporated into the total package price as presented. Discount includes: Eight Homes - \$10,000 deducted directly from the base price of the home. AID - \$15,000 discount off the land price. Eight Homes reserves the right to modify prices and promotions without prior notice. All designs are subject to final approval by the developer's design review panel. Package pricing is calculated using builder's preferred siting specifications. Images are provided for illustrative purposes only and should not be relied upon as exact representations. Eight Homes does not include furniture, décor, landscaping, or decking. Please refer to your specific house and land inclusion documents and working drawings for complete details. § Consult your Sales Consultant to evaluate site-specific compatibility and assess how modifications may affect the energy rating. † Double glazed windows are included with standard Eight Homes floorplans and facades. ‡ Garage side setback greater than 200mm and garage extension may incur additional cost due to driveway size - include grated strip drain. Modifications to floorplans, facades, or windows (including size changes or additional windows) may incur additional costs. ^ First home buyer offers are available only to those eligible for applicable state government First Homeowner Grants. For eligibility details, visit [www.sro.vic.gov.au](http://www.sro.vic.gov.au). Eight Homes DBU 18864